

**Perceptions / Lennox Gallery / 2-7 Nov 2010**

Adam Aaronson / Sarah Drake / Kate Cledwyn

77 Moore Park Road / London / SW6 2HH



**Adam Aaronson**

*"I am inspired by the ceaseless mutability of light on the landscape, the sky and on water. I am fascinated by horizons, the vanishing point where the land merges with the sky. I like the ambiguity of colour and contrast, I give each artwork a title that reflects my own inspiration, observers may find themselves recalling moments in time within their own perception."*

Adam Aaronson has been at the heart of British studio glass for more than twenty-five years, first as a gallery owner, discovering and promoting new glass talent, and subsequently as an artist in his own right. Adam specialises in free blown glass, and his work experiments with the hugely varied possibilities of the medium. His vessels and sculptures are at once a celebration of the simplicity of pure form, and also an investigation into the possibilities of layering.

**Volcano IV, V & VI**  
Blown Glass Vessels  
Left 21 x 17 x 8 cm  
Middle 20 x 16 x 5 cm  
Right 21 x 17 x 7 cm

**Lake Vista & Midstream**  
Blown Glass Vessels  
Left 40 x 20 cm  
Right 34 x 20 cm





**Sarah Drake**

*"It's incredibly difficult to say how we perceive people and places."*

By using thick, luscious layers of oil paint, Sarah Drake creates paintings that offer an impression of her subjects, rather than an exact copy like a photograph. She is often attracted to a particular aspect of her sitter's face, or to an element of their personal style, that in the process of painting is drawn out or even exaggerated. Sarah is passionate about painting and inspired by colour, texture and by working from life. Her canvases fizz with drama. Her work slips from reality and into a more imagined world; her painted perceptions of the world around her.

**Next Step (Francesca) &  
Woman, Head & Shoulders (Jeanette)**

Oil on Canvas  
Left 76 x 51 cm  
Right 102 x 76 cm





**Italian Student**  
Oil on Canvas  
91.5 x 61 cm

**Picnic (Antony)**  
Pencil on Paper  
31 x 23 cm



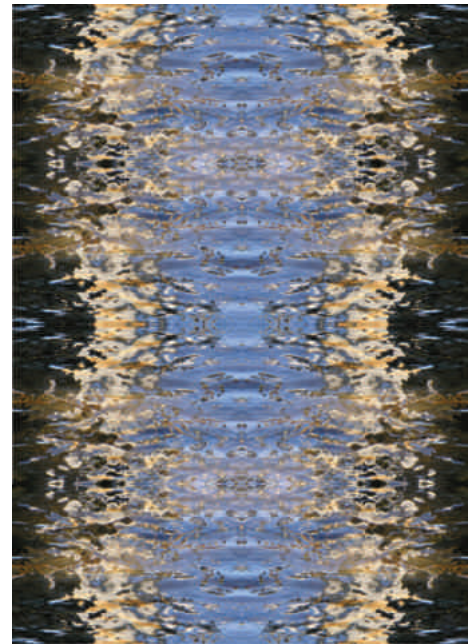


**Kate Cledwyn**

Focusing on pattern and light, Kate's photographic art reveals the extraordinary detail in our everyday surroundings. Kate feeds off a broad range of inspiration from travelling abroad and exploring closer to home. Life in the country provides her with the wonderful intricacies of the natural world, travel brings wild seas and alternative landscapes, and London offers fascinating architecture and the chaos of life.

The work Kate is showing in 'Perceptions' has a water theme, observing patterns from the play of light and colour on its surface. She captures an instant, a momentary vision, a magical combination of light, reflection and movement, and produces unique images with fascinating insight and an alternative 'perception'.

**Pond Life & Channel**  
Face Mounted Acrylic Prints  
Left 81 x 66 cm  
Right 58.6 x 82 cm



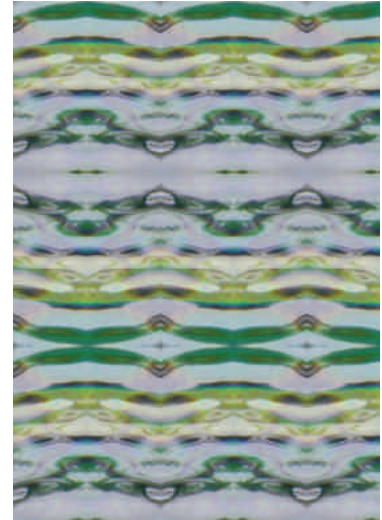
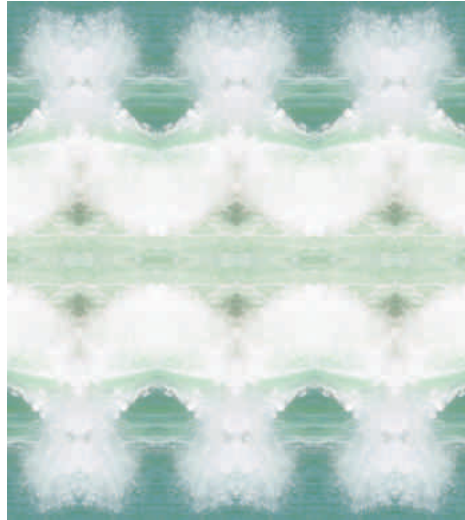
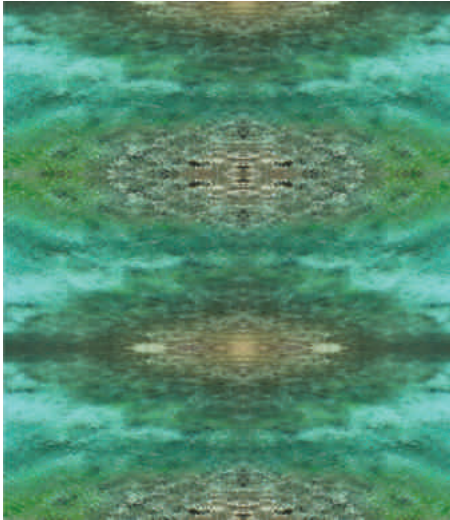
**Turquoise China, Shockwaves & Oriental Tide**

Face Mounted Acrylic Prints

Left 66 x 76 cm

Middle 66 x 73.5 cm

Right 40.8 x 58 cm



# Perceptions / 2-7 Nov 2010

Adam Aaronson / Sarah Drake / Kate Cledwyn

## Lennox Gallery

77 Moore Park Road  
London SW6 2HH

t: 0207 408 0026

Adam Aaronson

t: 07950 002 246 / e: [jenny@adamaaronson.com](mailto:jenny@adamaaronson.com)  
[www.adamaaronson.com](http://www.adamaaronson.com)

Sarah Drake

t: 07968 211 464 / e: [sarahgdrake@btinternet.com](mailto:sarahgdrake@btinternet.com)  
[www.sarahdrake.co.uk](http://www.sarahdrake.co.uk)

Kate Cledwyn

t: 07746 968 548 / e: [kate@katecledwyn.com](mailto:kate@katecledwyn.com)  
[www.katecledwyn.com](http://www.katecledwyn.com)

Cover Artwork Details: Adam Aaronson 'Lake Vista', Sarah Drake 'Franca', Kate Cledwyn 'Water Poles'.

